

# RS4U-8112-MES

Multiple & synchronization control in manufacturing execution system.



## 4U System for Industrial Automation & Control Targeting Manufacturing Execution System

### Key Features

- Haswell platform with ECC support
- Integrated I210 GbE x1 with EtherCAT optional 3<sup>rd</sup> party driver support
- Xeon® power with Desktop price, higher C/P
- API function control by Super IO
- Support up to 9x legacy PCI slots

### Key Benefits

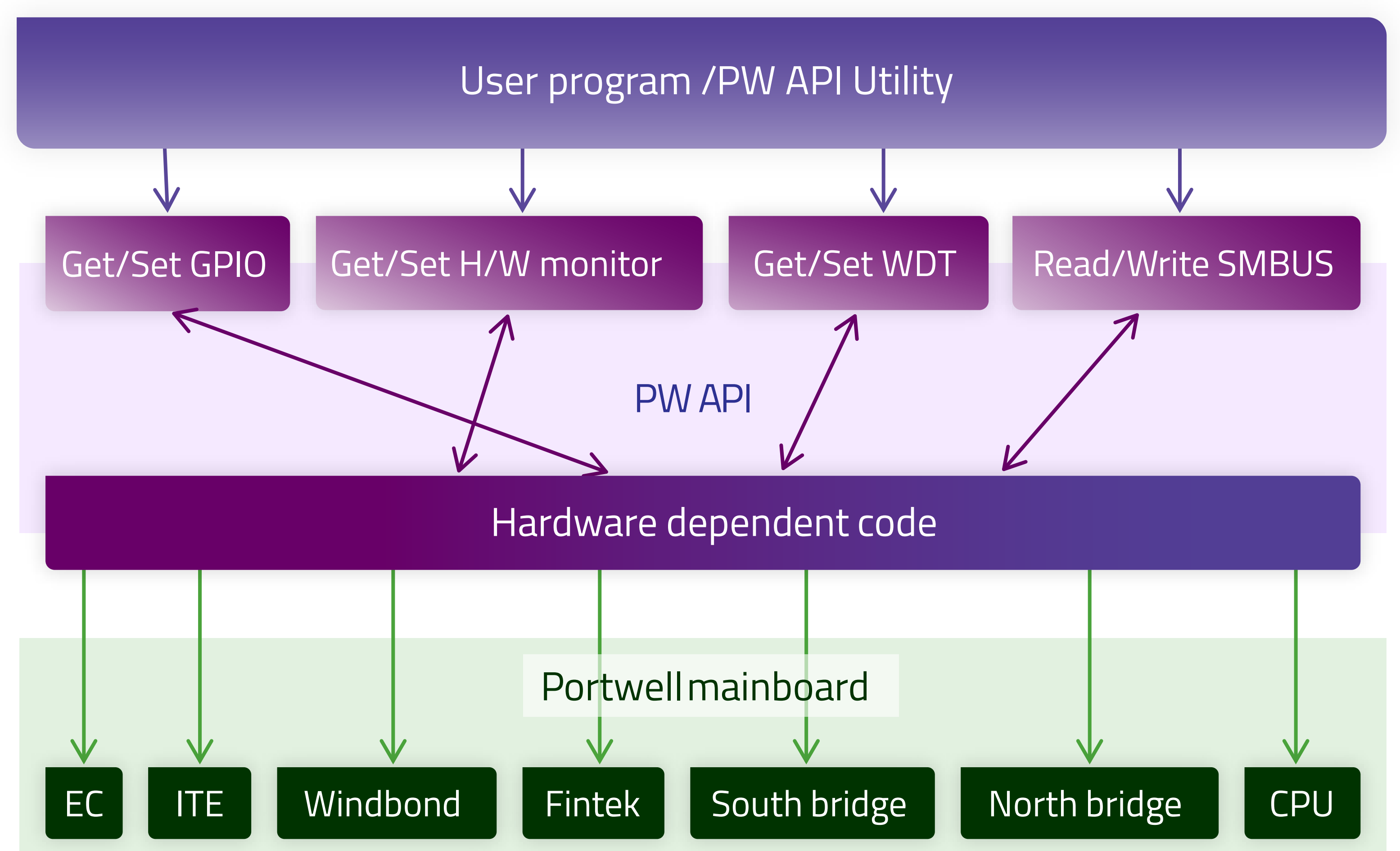
- Cost vs. Performance
- Mature platform for quick design win
- EtherCAT optional support available
- Rich legacy expansion support
- Easy H/W control by API

### Specification

|                       |  |
|-----------------------|--|
| CPU                   | Intel® Core™ Xeon® E3-1225v3 series processor                            |
| Memory                | 2x 4GB DDR4 4GB ECC Memory   |
| Storage               | Internal: 3x 5.25", 1x 3.5" HDD  |
| I/O Interface         | 1x DVI-I<br>2x USB3.0 (Rear)<br>2x USB2.0 (Front)<br>2x Gigabit Ethernet |
| Expansion             | 1x PCIe x16<br>1x PCIe x8,<br>9x PCI sockets                             |
| Power Input           | 100V~240V AC, Full Range   |
| Dimension             | 150 x 140 x 86 mm  |
| Weight                | 12Kg   |
| Operating Temperature | 0~50 °C  |

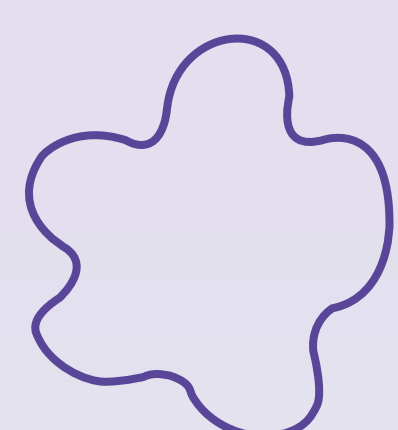
### API: Application Programming Interface

Portwell API(Application Programming Interface) is a bridge to simplify and enhance H/W & S/W application implementation efficiency



What API do ?

- Hardware monitor- (PWR, Temp, Fan speed)
- Fan control - (Temp controls fan speed)
- GPIO control (programmable)
- WDT (Reset, Show-down, NMI)
- SMBus (controlled by PCH)
- I<sup>2</sup>C



### Portwell, Inc. Headquarters

No. 242, Bo'AI St., Shu-Lin Dist,  
New Taipei City 238, Taiwan  
Tel: +886-2-77318888  
Fax: +886-2-77319888  
E-mail: [info@portwell.com.tw](mailto:info@portwell.com.tw)  
<http://www.portwell.com.tw>

**American Portwell**  
(Fremont, CA)  
44200 Christy St., Fremont, CA 94538, USA  
Tel: +1-510-403-3399  
Fax: +1-510-403-3184  
E-mail: [info@portwell.com](mailto:info@portwell.com)  
<http://www.portwell.com>

**Portwell Japan, Inc.**  
(Tokyo)  
〒112-0011 4-27-10, Sengoku,  
Bunkyo-ku, Tokyo, Japan  
Tel: +81-3-6902-9225  
Fax: +81-3-6902-9226  
E-mail: [info@portwell.co.jp](mailto:info@portwell.co.jp)  
<http://www.portwell.co.jp>

**Portwell Japan, Inc.**  
(Osaka)  
〒532-0004 Ste.501 Nippo Shin-osaka  
Dai-2 Bldg, 1-8-33 Nishi-Miyahara,  
Yodogawa-ku Osaka Japan  
Tel: +81-6-4807-7721  
Fax: +81-6-4807-7720  
E-mail: [info@portwell.co.jp](mailto:info@portwell.co.jp)  
<http://www.portwell.co.jp>

**Portwell Korea, Inc.**  
O-BIZ Tower 1901, No.126,  
Beolmal-ro, Dongan-gu, Anyang-si,  
Gyeonggi-do, Korea, 431-060  
Tel: +82-31-450-3043  
Fax: +82-31-450-3044  
E-mail: [info@portwell.co.kr](mailto:info@portwell.co.kr)  
<http://www.portwell.co.kr>

**Shanghai Portwell**  
(201612), Room 1303-1, Building 33,  
No.258, Xinhuan Highway, Songjiang  
District, Shanghai  
Tel: +86-21-5771-2505  
Fax: +86-21-5772-2965  
E-mail: [info@portwell.cn](mailto:info@portwell.cn)  
<http://www.portwell.com.cn>

**Portwell Latin America**  
(Brazil)  
Rua Engenheiro Roberto Fischer, 208,  
Sala No.3-Parque Industrial software  
CEP 81250-025-CIC-Curitiba-Brazil  
Tel: +55-41-3121-7200  
Tel: +55-41-3121-7201  
E-mail: [vendas@portwell.com.br](mailto:vendas@portwell.com.br)  
<http://www.portwell.com.br>

**European Portwell**  
Schillingweg 3, 2153 PL  
Nieuw Vennep, The Netherlands  
Tel: +31-252-620790  
Fax: +31-252-621325  
E-mail: [info@portwell.eu](mailto:info@portwell.eu)  
<http://www.portwell.eu>

**Portwell UK Ltd.**  
Office TH2  
Trident House, Trident Park Basil  
Hill Road, Didcot, OX11 7HJ, UK  
Tel: +44-1235-750760  
Fax: +44-1235-750761  
E-mail: [info@portwell.co.uk](mailto:info@portwell.co.uk)  
<http://www.portwell.co.uk>

**Portwell Deutschland GmbH**  
Otto-Hahn-Str. 48, D-63303 Dreieich  
Tel: +49-6103-3008-0  
Fax: +49-6103-3008-199  
E-mail: [info@portwell.eu](mailto:info@portwell.eu)  
<http://www.portwell.de>

**Portwell India Technology**  
2<sup>nd</sup> Floor, 5M-665, 5<sup>th</sup> Main Road, OMBR  
Layout, Banaswadi, Bangalore -560043,  
India  
Tel: +91-80-41684255  
E-mail: [info@portwell.in](mailto:info@portwell.in)  
<http://www.portwell.in>